

MONTHLY MEMBERSHIP PROGRESS REPORT

LOCATION INDIA

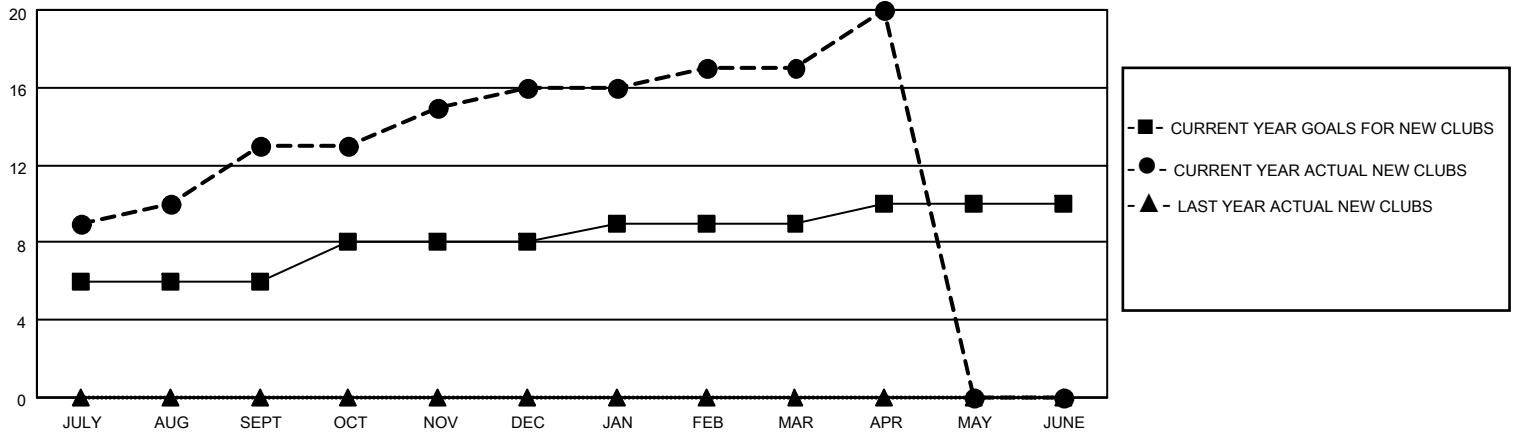
District 324 F

Results as of: 4/30/2022

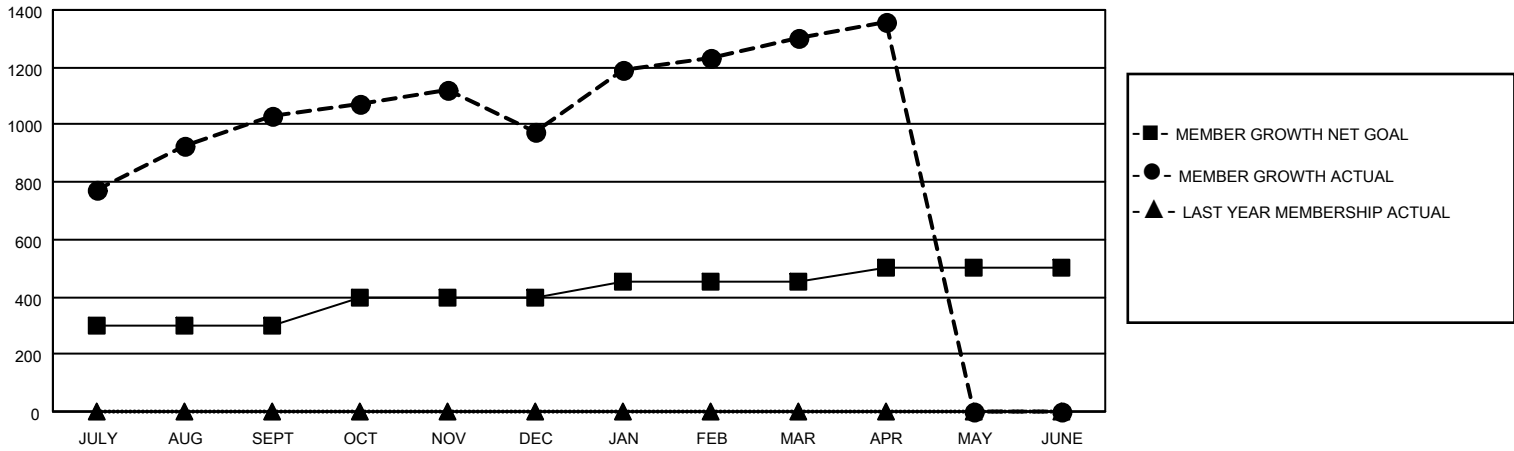
Clubs			
RESULTS FOR 2021-2022			
QUARTER	NEW CLUB GOAL	NEW CLUBS	DROPPED CLUBS
JULY/AUG/SEPT	6	13	0
OCT/NOV/DEC	2	3	3
JAN/FEB/MAR	1	1	1
APR/MAY/JUNE	1	3	0

Members			
RESULTS FOR 2021-2022			
QUARTER	MEMBER GROWTH NET GOAL	MEMBER GROWTH ACTUAL	DROPPED MEMBERS ACTUAL (including transfers)
JULY/AUG/SEPT	300	1266	194
OCT/NOV/DEC	100	262	312
JAN/FEB/MAR	50	463	76
APR/MAY/JUNE	50	105	48

GOALS AND ACTUAL NEW CLUBS CUMULATIVE



GOALS AND ACTUAL MEMBERS CUMULATIVE



DROPPED CLUBS: 4

210 CLUBS OF 238 ADDED 1 OR MORE NEW MEMBERS

GENDER DISTRIBUTION

DROPPED MEMBERS

DECEASED	48
CLUB CANCELLED	90
OTHER	492
TOTAL	630

MALE	9,395 (87.98%)
FEMALE	1,283 (12.02%)
NON BINARY	0 (0.00%)
PREFER NOT TO ANSWER	0 (0.00%)

[CLICK HERE FOR CUMULATIVE MEMBERSHIP DATA](#)

TOTAL FAMILY UNIT MEMBERS	1,946
FAMILY MEMBERS PAYING HALF DUES	1,112